

## 婦女及兒童庇護中心

Shelter for Women and Children



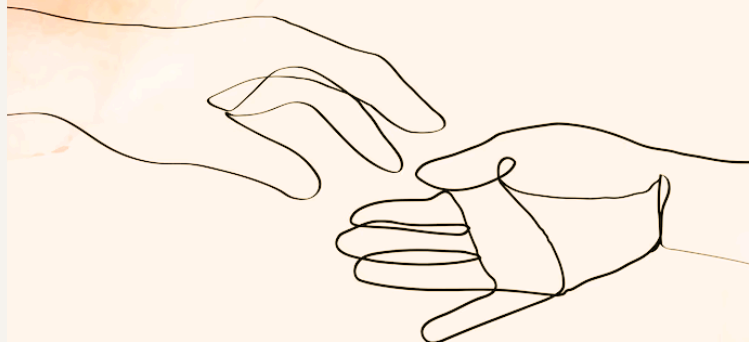
24小時婦女求助熱線  
24-HOUR WOMAN HOTLINE **2522 0434**

✉ hhshelter@harmonyhousehk.org

🌐 <https://www.harmonyhousehk.org/>

🏠 香港九龍尖沙咀郵政信箱99068號  
P.O. Box 99068, Tsim Sha Tsui Post Office,  
Kowloon, Hong Kong

## 請讓我幫助妳 Please let me help



若您正面對家庭衝突或家庭暴力，而需要一個臨時安全的地方暫避，請致電24小時婦女求助熱線2522-0434申請入住庇護中心。

*If you are suffering from family disputes or domestic violence and need a temporary and safe place for a time-out, please call our 24-hour Woman Hotline 2522-0434 for the Shelter services.*

### 宗旨及目標 Goals and Objectives

- 為正面對家庭衝突或家庭暴力的婦女及其子女提供安全和緊急的庇護服務  
To provide a safe and immediate refuge for the women and their children who are suffering from family disputes or family violence
- 為正受家庭暴力困擾之家庭及親密伴侶提供24小時即時支援及轉介服務  
To offer 24-hour immediate supports and referrals for families and intimate partners affected by family disputes or domestic violence

### 服務對象 Service Targets

正面對家庭衝突或家暴的人士，包括：  
Those who are suffering from family disputes or domestic violence including:

- 婦女及其子女 (任何年齡女童及12歲以下之男童)  
Abused women and their children (girls of all ages and boys under 12)
- 13-17歲少女(須得到家長同意並由社工轉介)  
Teenage girls aged 13-17 (Parent's consent and referral from social worker are required)

### 申請入住方法 Application for Admission

- 自行致電24小時婦女求助熱線 25220434  
Self-approach through our 24-hour Woman Hotline 2522 0434
- 由社工或其他專業人士轉介  
Referral by social workers or other professionals

### 終止服務方法 Termination of Service

庇護中心或入住婦女均可要求終止服務  
Either the Shelter or residents can initiate the termination of service



# 服務內容

## Scope of Services

### 1 免費短期住宿服務

#### Free and Short-term Refuge Service

提供兩星期的基本住宿服務，在特殊情況下可以延長至三個月。

The period of stay is usually two weeks. Under special circumstances, extension to a maximum of three months may be granted.

### 2 24小時婦女求助熱線服務

#### 24-hour Woman Hotline Service

為面對家庭暴力的婦女提供危機評估、情緒支援、轉介服務。如有需要，可以安排入住庇護中心，並介紹及轉介有需要的服務。

Risk assessment of domestic violence, crisis intervention, emotional support, and referrals are provided. Admission to the Shelter can be arranged if needed.

### 3 個人及小組輔導

#### Individual and Group Counselling

庇護中心社工提供危機評估、轉介服務、個案輔導及治療小組。

Crisis assessment, referrals, casework counselling and therapeutic groups are provided.

### 4 教育及發展性活動

#### Educational and Developmental Activities

提供不同活動及支援兒童照顧，幫助宿友適應宿舍生活

Different activities and childcare assistance are provided for the residents to adapt to the shelter life.



# 庇護中心是甚麼?

## What's a Shelter?

庇護中心是一個秘密及安全的地方，讓您和子女休息。

*This is a secret and safe place for you and your children to take a break.*

您需要自行煮食及清洗衣服，這裡有客廳和廚房等設施，並有基本傢俱、電器和煮食用具。庇護中心社工提供輔導服務，您和子女可以參加不同的小組和活動。

*There are living rooms and kitchens with basic furniture, electrical appliances and cooking utensils. You need to cook and wash clothes by yourself. The shelter social workers provide counselling services. You and your children can join groups and programmes.*

### 離舍跟進服務

#### Aftercare Service

三個月離舍跟進，包括輔導、情緒支援活動、招募義工及/或轉介至其他社會資源。

Three-month aftercare services including counselling, emotional support activities, volunteer recruitment, and / or referrals to community resources.

